

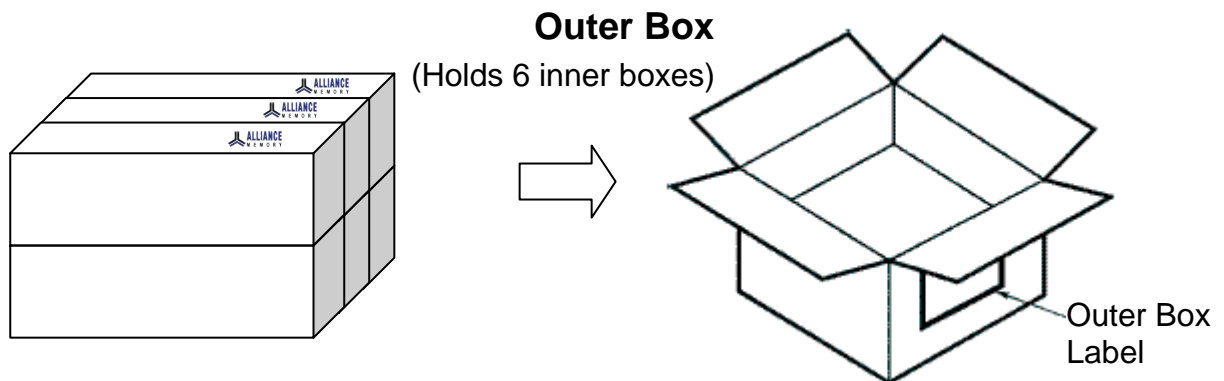
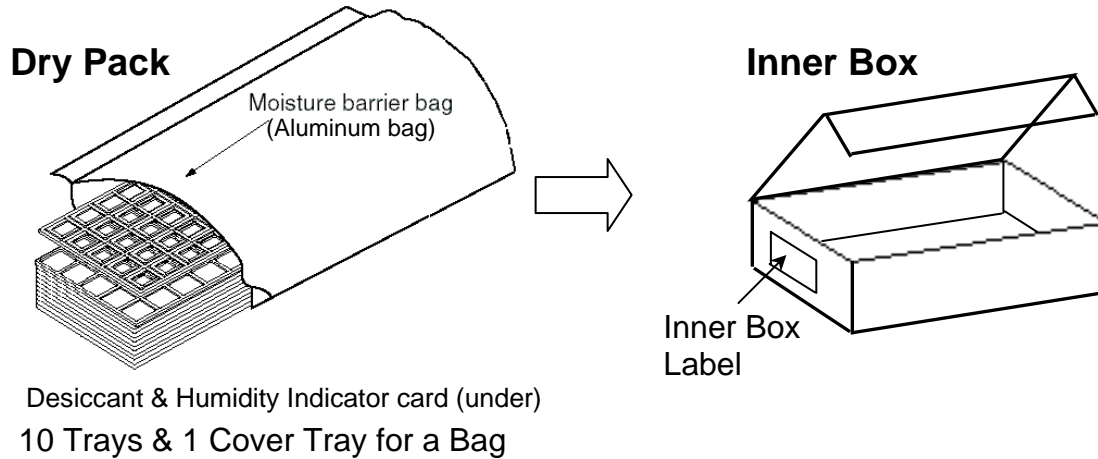
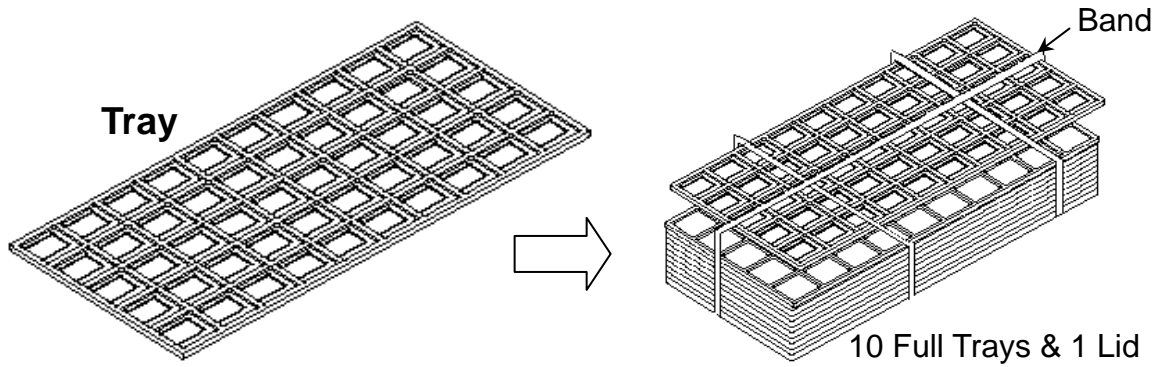
Packing Procedure For 9x13.5 96B BGA Product

Table of Contents

(1) PACKING PROCEDURE	2
(2) PACKAGING QUANTITY.....	4
(3) SPECIFICATION OF SHIPPING BOX	5
(4) PACKING DRAWING	10

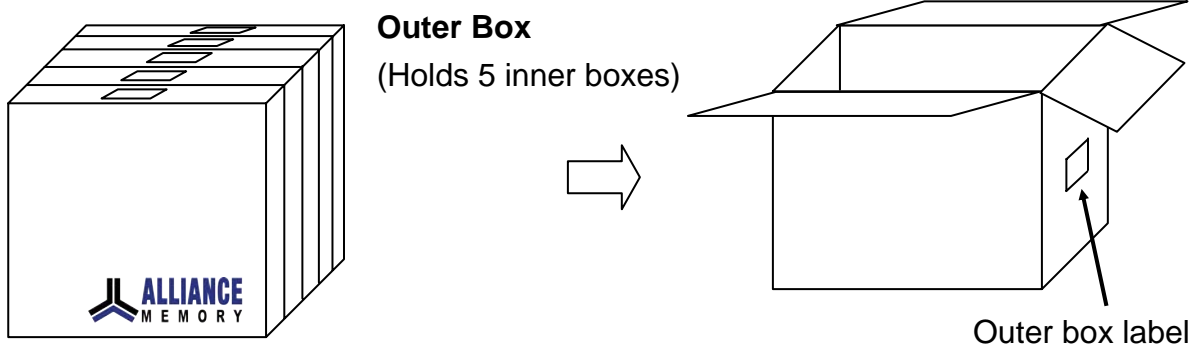
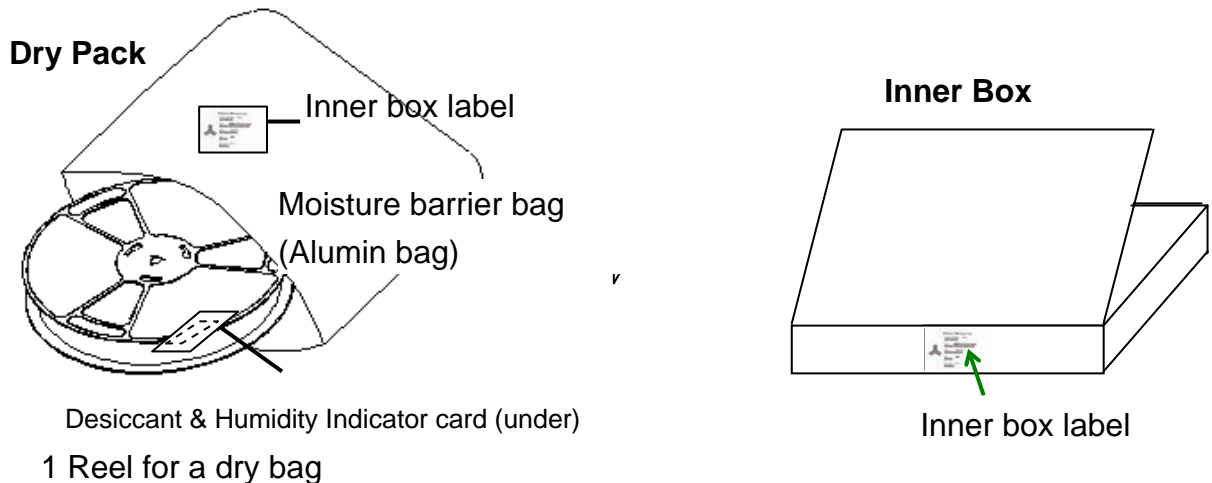
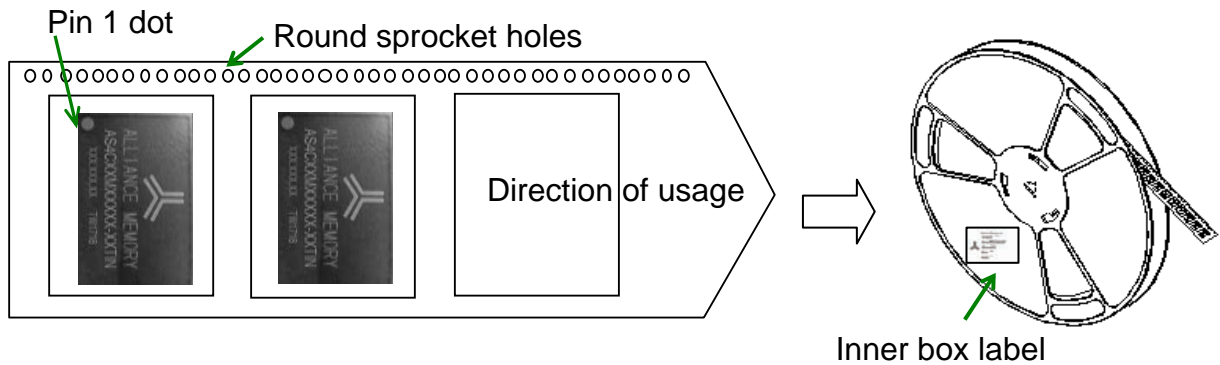
(1) Packing Procedure -1

■ Packing procedure for Tray



(1) Packing Procedure -2

■ Packing procedure for Tape & Reel



(2) Packaging Quantity

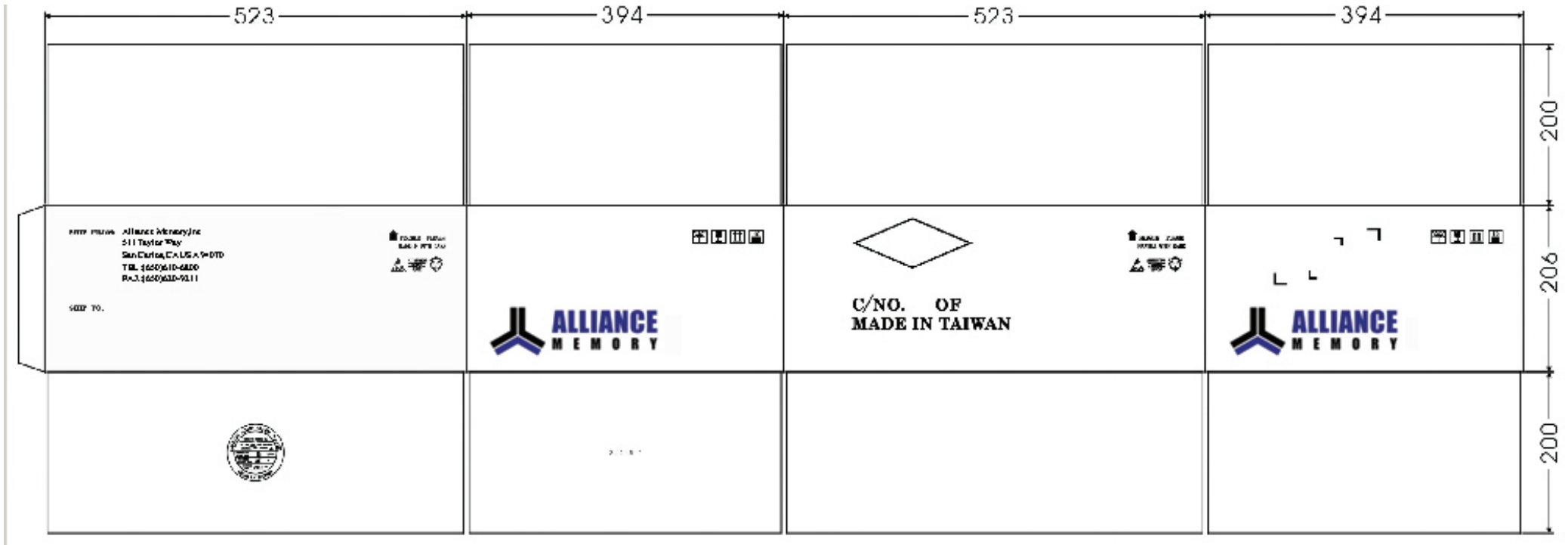
■ Quantity of Container

The quantity for each container is described as below table for reference.

Pkg. Type	Packing Qty	Dry Bag	Inner Box	Outer Box
9x13.5 96Ball-BGA	180 ea/Tray	10 Tray (1800 ea)	1 Dry Bag (1800 ea)	6 Inner Boxes (10800 ea)
	2000 ea/T&R	1 Reel (2000 ea)	1 Dry Bag (2000 ea)	5 Inner Boxes (10000 ea)

(3) Specification of Shipping Box -1

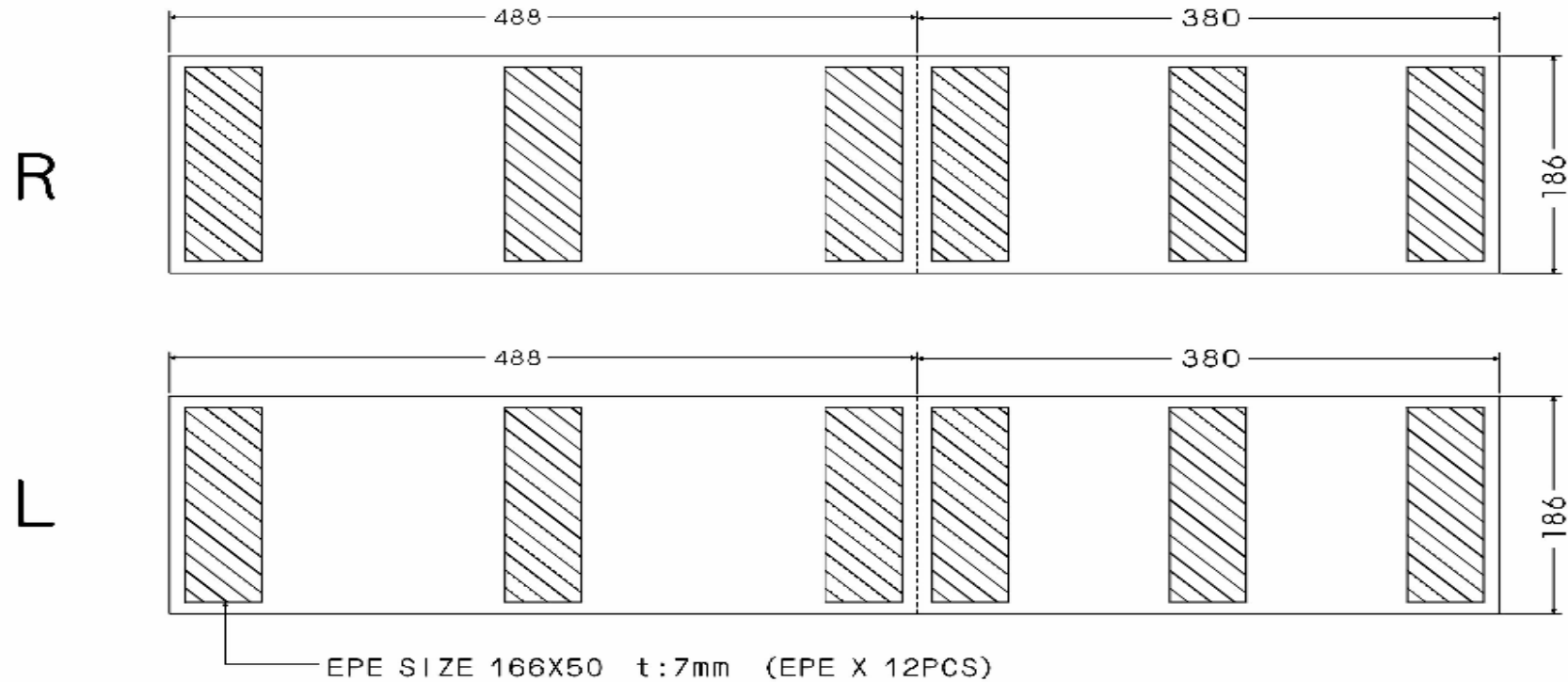
■ Tray Outer Box Drawing



Tolerance: $\pm 5\text{mm}$

(3) Specification of Shipping Box -2

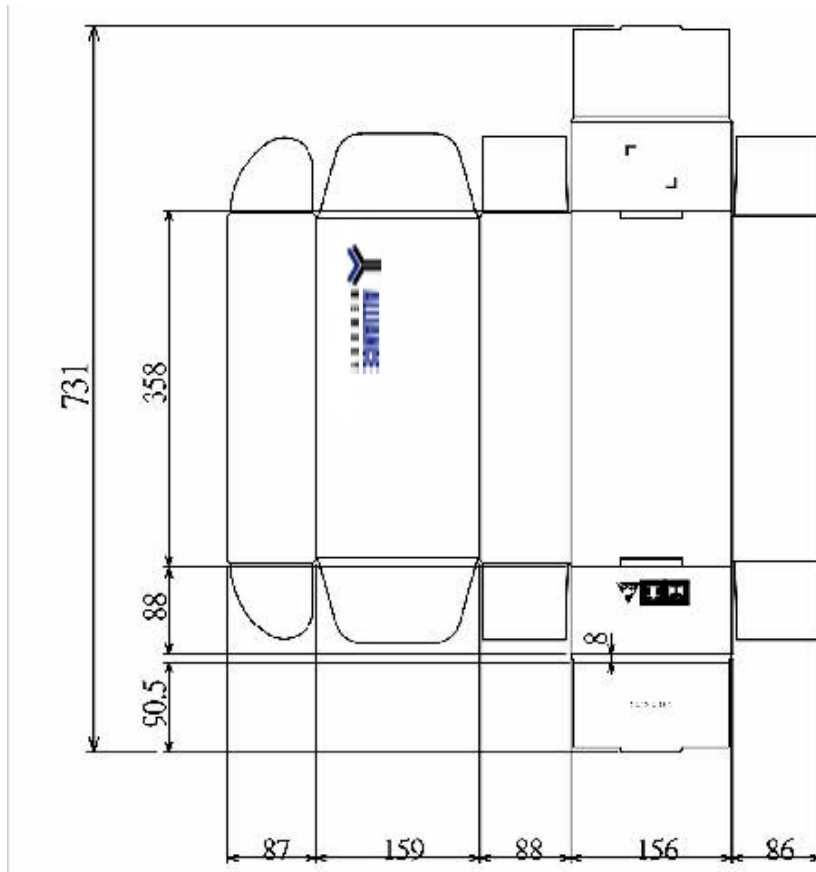
■ Tray Outer Box Drawing-buffer



Tolerance: $\pm 3\text{mm}$

(3) Specification of Shipping Box -3

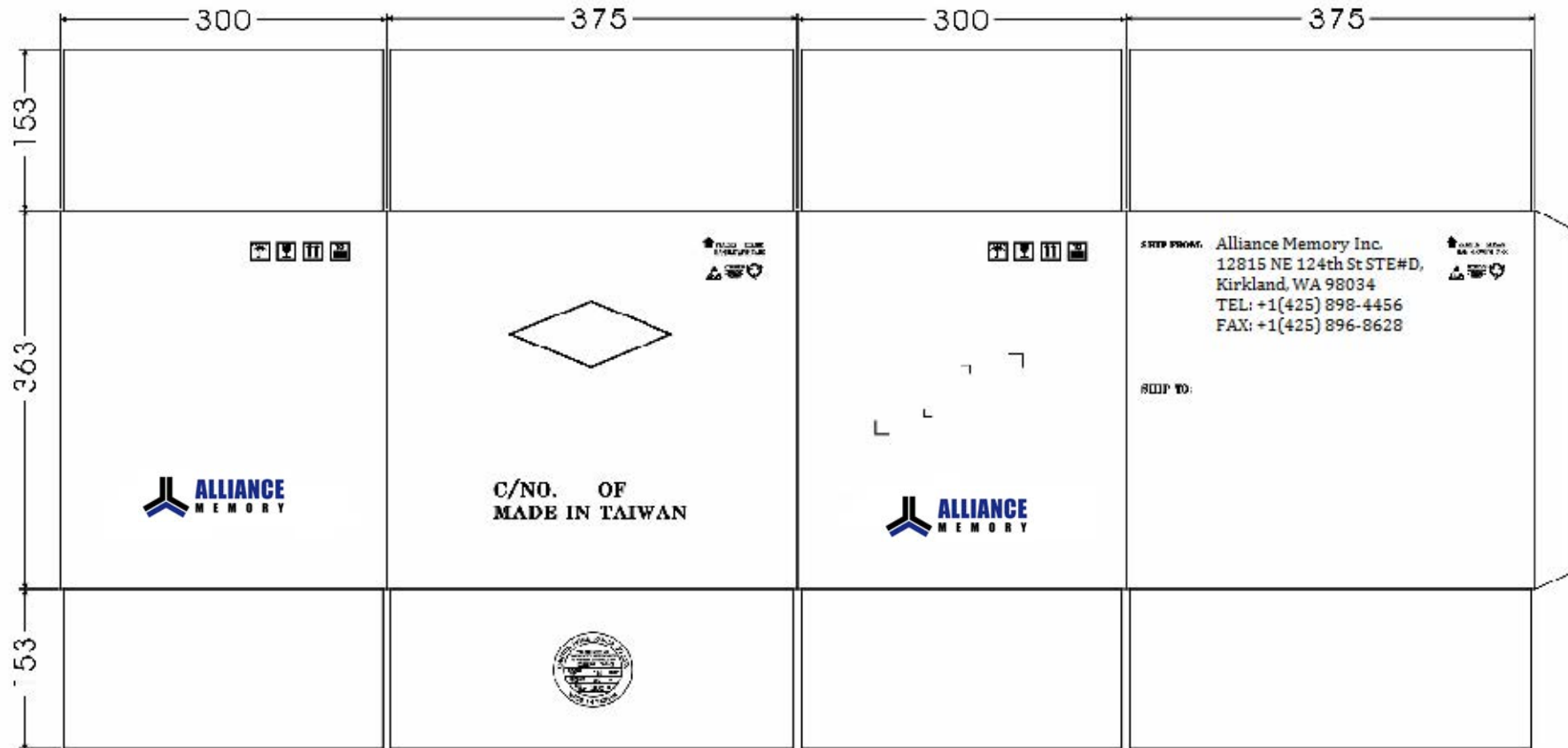
■ Tray Inner Box Drawing



Tolerance: $\pm 3\text{mm}$

(3) Specification of Shipping Box -4

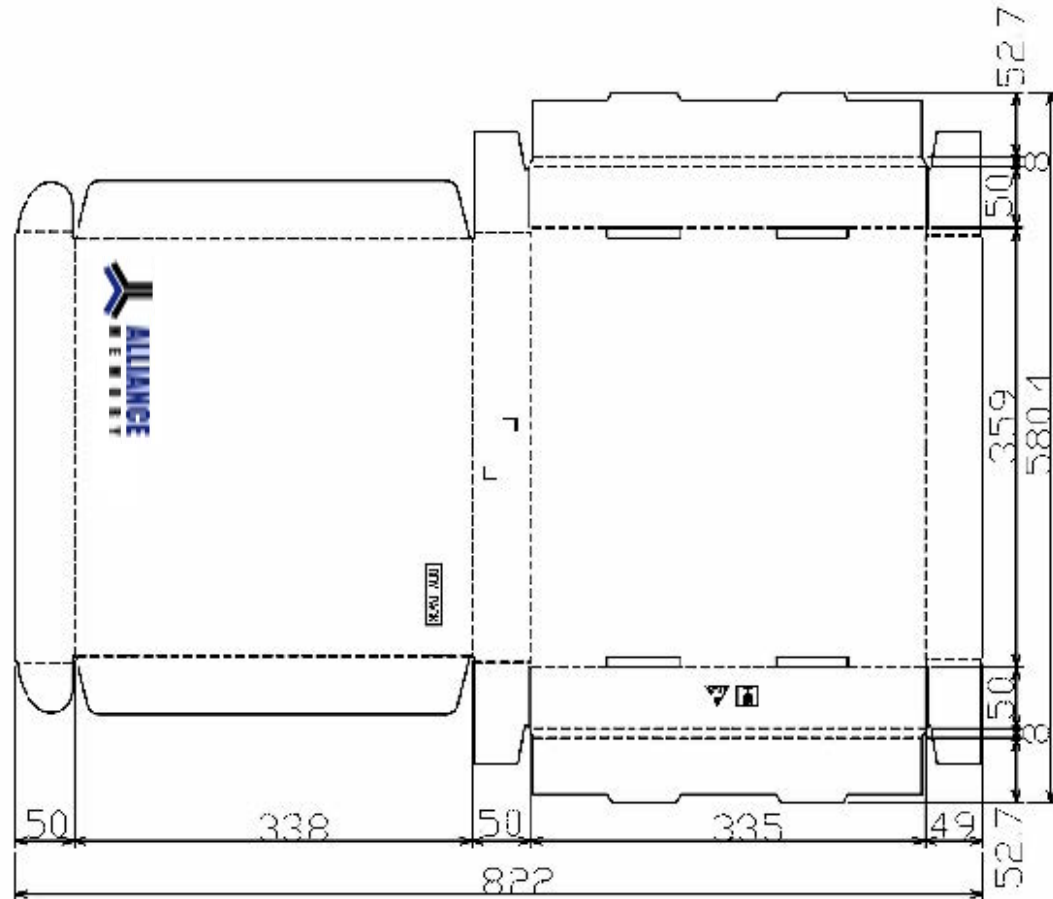
■ T/R Outer Box Drawing



Tolerance: ±5mm

(3) Specification of Shipping Box -5

■ T/R Inner Box Drawing



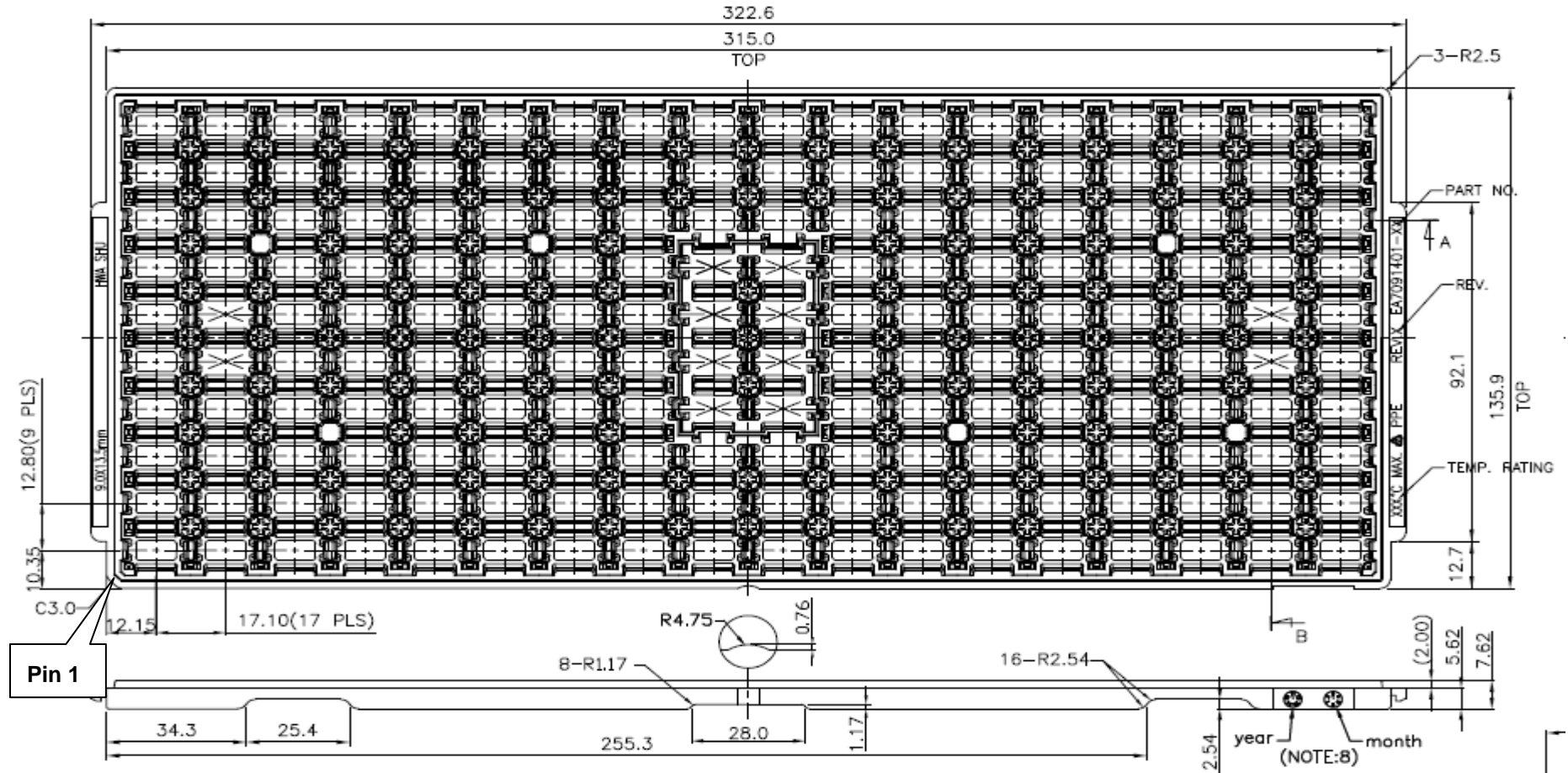
Tolerance: $\pm 3\text{mm}$

DRY PACK



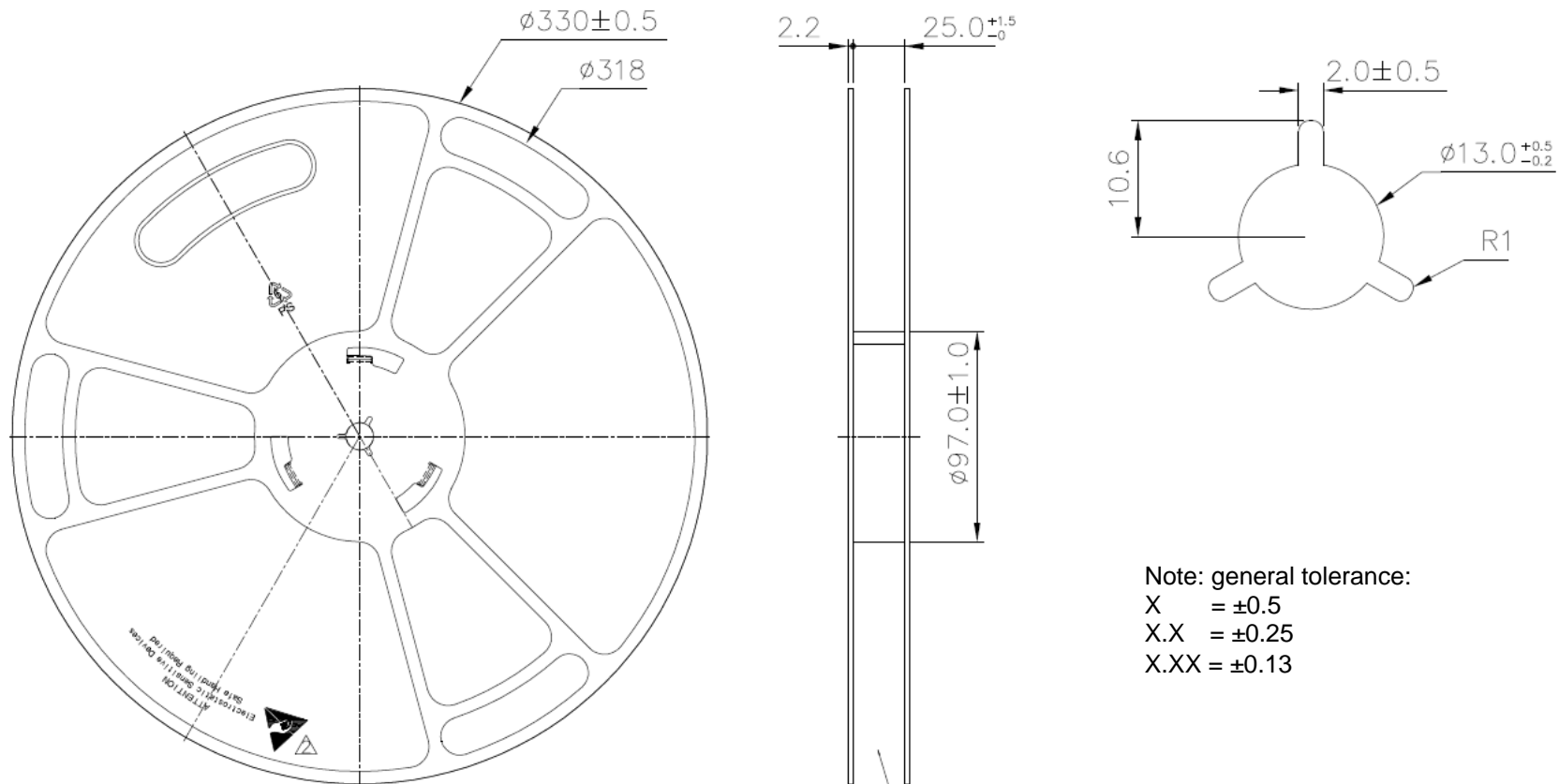
(4) Packing Drawing -1

■ Tray Drawing of 9x13.5 96B-BGA



(4) Packing Drawing -2

■ Lock Reel Drawing of 9x13.5 96B-BGA

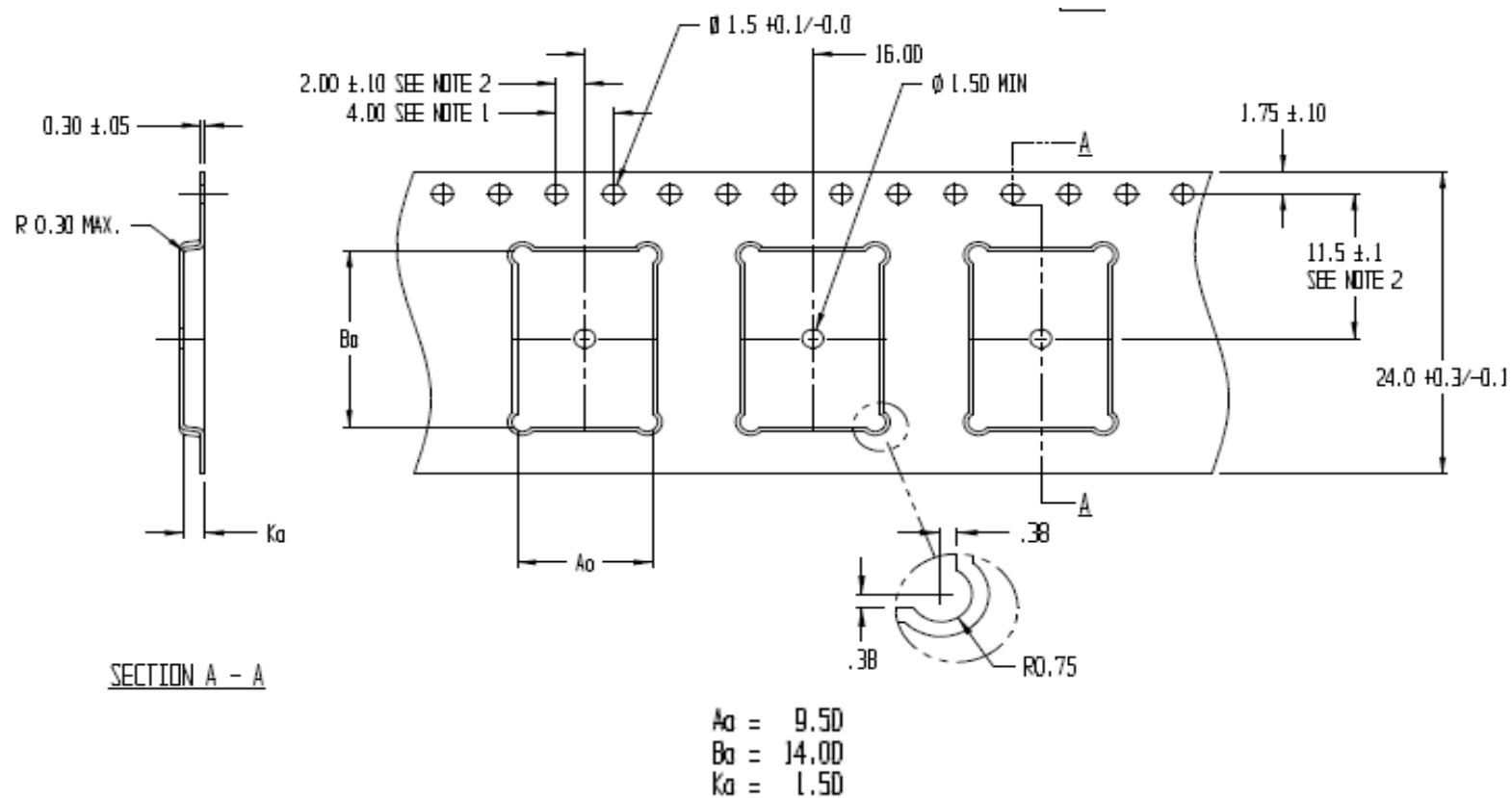


Note: general tolerance:

X = ± 0.5
 X.X = ± 0.25
 X.XX = ± 0.13

(4) Packing Drawing -3

- Carrier Tape Drawing of 9x13.5 96B-BGA



Note: general tolerance (mm): X = ±0.5 X.X = ±0.25 X.XX = ±0.13